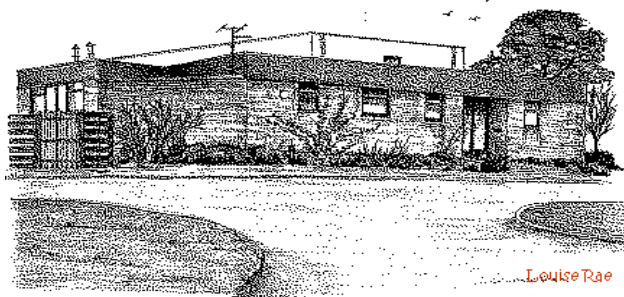


# Parrett and Axe News



## School Year 2023-24 June 2024 No 10

### Diary Dates (Please keep!!)

Every Tuesday in June	Hockey Club	3-4pm
Every Wednesday in June	STAMP Drama Club	3:15-4:15pm
Friday 7 <sup>th</sup> June	Lulworth class trip to the Fossil Festival	9:00am – 3:25pm
Thursday 13 <sup>th</sup> June	Year 5/6 Rounders Tournament	12:30pm – 2:45pm
Tuesday 18 <sup>th</sup> June	Year 5 sailing trip	8:20am – 5:45pm
Thursday 20 <sup>th</sup> June	Year 2, 5 & 6 NSPCC workshop	
Friday 14 <sup>th</sup> June	Super Stride	1:30pm – 3:00pm
Friday 21 <sup>st</sup> June	Corfe Class Trip to the Farm	9:15am – 2:30pm
Sunday 23 <sup>rd</sup> June	Summer Fayre	
Tuesday 25 <sup>th</sup> & Wednesday 26 <sup>th</sup> June	Year 6 Leavers Play	Tuesday: 3:45 – 4:45pm Wednesday: 5pm – 6pm
Thursday 27 <sup>th</sup> June	Year 4 & 5 Beaminster Festival Schools concert Quadkids Year 3/4/5/6	9:30am – 11:30am
Friday 28 <sup>th</sup> June	Sports Day	1:00pm – 3:00pm
Friday 5 <sup>th</sup> July	Whole school trip to Weymouth	
Monday 8 <sup>th</sup> and Tuesday 9 <sup>th</sup> July	Year 6 Beaminster School transitions Whole school new class transitions	
Wednesday 10 <sup>th</sup> , Tuesday 11 <sup>th</sup> & Friday 12 <sup>th</sup> July	Year 6 residential to Pinkery	

### Dear Parents

We look forward to welcoming you back next half term which is looking to be very busy as we head towards the Summer Holidays. Could I bring to your attention to our Summer Fayre on Sunday 23<sup>rd</sup> June. Please come and support this event as I know how much hard work the PTFA have put in organising it. We also have the super stride back this year to help raise funds for a much-needed outdoor classroom.

As it is getting warmer can I remind you to ensure your child brings to school sun cream, a sunhat and a named water bottle.

Mr Smith

### **Lateness**

Please can we remind parents that the gates for school open at 8:30am and registration is taken at 8:40am. The gates will be shut at 8:40am and any child arriving after this time will have to come through the office and will receive a late mark.

### **PTFA**

This year our Summer Fayre will be held on Sunday 23<sup>rd</sup> June. There will be a bar, BBQ, animals, amusements, tombola, raffle and much, much more. If anyone is able to help out on the day even for just one hour please let the PTFA or the school office know.

Don't forget that we are still running our school lottery. Every week there will be a guaranteed winner from our school lottery group plus a chance to win the national prize of £25,000. All for as little as £1 a week. The school gets a percentage of every ticket bought. <https://www.yourschoollottery.co.uk/lottery/school/Parrett-And-Axe-Primary>

### **Sport**

On the 25<sup>th</sup> April, 12 of our KS2 pupils took part in their first ever Handball tournament at Beaminster School. 5 other schools in the collaboration took part on the 3G pitch at Beaminster School. We were proud to win our first game and draw a couple of others especially as the pitches were much larger than we had previously played on. We were proud to come 4<sup>th</sup> and all our children displayed our school and sports values shaking hands with the opposing teams. A massive thankyou to our parents that transported and supported this event and to our children who took part.

Year 1 enjoyed an afternoon of multiskills at Beaminster School on the 9<sup>th</sup> May where they joined together with children from our collaboration. Some of our past pupils were sports leaders at this event.

While writing this, we are looking forward to a Rounders tournament on 13<sup>th</sup> June, Quadkids athletics event for year 3, 4, 5 & 6, sailing for year 5 at Portland Sailing Academy and of course sports day.

I will be reapplying for the School Games Mark, Platinum award again this month. It is an award that we are proud to achieve and have done so since 2016 and is awarded to very few schools here in the south west.

Thank you again to all our parents who actively support our school in sport.

Mrs Harris

### **Year 6 Leavers Play**

This year the year 6's will be performing their play at Mosterton Village Hall on Tuesday 25<sup>th</sup> and Wednesday 26<sup>th</sup> June.

### **Beaminster Festival Concert**

Years 4 & 5 will be attending the annual Beaminster Festival Concert on Thursday 27<sup>th</sup> June at St. Mary's Academy hall. The performers will be the Bone-fide Trombone Quartet.

### **Year 5 Sailing**

Year 5 are going sailing at WPNSA at Portland on Tuesday 18<sup>th</sup> June. A letter will be going out after half term with more details and there will also be an email sent with a link to an

online indemnity form. This must be completed before the trip as the centre will not allow anyone on the water without a completed form.

Please remember to bring swimwear, water bottle, packed lunch, towel, sun cream, medication, spare clothes, and suitable footwear (no crocs or flip flops)

### **Super Stride**

After the success of last year's Super Stride, we have decided to hold another one this year! Last year the playground got a new lick of paint, this year we are aiming higher. We would like to raise funds this year to provide an enclosed outdoor classroom to enrich forest school sessions, and enable other lessons to venture out into nature regardless of the weather.

Super Stride will be a fun, 2k or 5k (your choice!) run or walk. Parents and siblings are invited to take part and to also get sponsored. The optional fancy dress theme this year is Sports - this is to acknowledge The Euros and The Olympics that will be taking place this year.

Super Stride will take place on Friday 14th June at 1.30pm. Parents and siblings can arrive from 1.20pm. Students can come to school already in their fancy dress. (Fancy dress is optional) We are also very pleased to announce that Wessex Internet have kindly sponsored our medals for this year's participants.

### **Hot School Meals**

Local Food Links are our hot school meal provider. To find out about the meals they provide, please visit <https://www.localfoodlinks.org.uk/> If you haven't received an activation code letter, please ask the school office for a code which is required when you use the system for the first time. Meals can be ordered, changed or cancelled 7 days in advance.

All Corfe and Chesil Key Stage 1 children are entitled to free school meals under the Government Universal Infant Free School Meals Scheme. Meals for Key Stage 2 children are very reasonable at £2.50 each.

Please log in to your LFL account and check that meals have been ordered and that you have noted the days where you need to send a packed lunch for your child. If you have any problems ordering meals during the holidays, please contact Local Food Links they will have staff that can help you.

### **Free School Meals, Pupil Premium**

If your child qualifies for free school meals, not only will they receive a healthy meal on every school day, they'll also get

- Access to free holiday clubs
- Extra money for their school towards more teachers and activities

It's easy to find out if you qualify - complete Dorset Councils confidential checker at [dorsetcouncil.gov.uk/free-school-meals](http://dorsetcouncil.gov.uk/free-school-meals) or telephone 01305 221090

If your child is in reception to year 2 and you receive qualifying benefits, you could get extra £££'s for your school! Apply for the Pupil Premium at [dorsetcouncil.gov.uk/pupil-premium](http://dorsetcouncil.gov.uk/pupil-premium)

### **ParentLine 5-19**

ParentLine 5-19 is a NHS text messaging service which allows parents and carers of school children aged 5-19 to gain confidential advice and support from the School Nursing team for issues such as:

- Healthy eating/weight management
- Toileting
- Sleep
- Development
- Behaviour
- Emotional health and wellbeing
- School refusal.

Parents/carers can send a text to the ParentLine number 07312263131 and a trained healthcare professional from the School Nursing team will respond during office hours 9-4 Monday to Friday during School term times.

## Autumn 2024

<b>CHILDREN IN SCHOOL</b>  Thurs 5 <sup>th</sup> Sept To Fri 20 <sup>th</sup> Dec	<b>Half Term</b>  <b>Christmas Holidays</b>	Mon 28 <sup>th</sup> Oct To Fri 1 <sup>st</sup> Nov  Mon 23 <sup>rd</sup> Dec To Fri 3 <sup>rd</sup> Jan	<b>Inset Days</b> Tues 3 <sup>rd</sup> sept Wed 4 <sup>th</sup> Sept
--	---	--	---

## Spring 2025

<b>CHILDREN IN SCHOOL</b>  Tues 7 <sup>th</sup> Jan To Fri 4 <sup>th</sup> April	<b>Half Term</b>  <b>Easter Holidays</b>	Mon 17 <sup>th</sup> Feb To Fri 21 <sup>st</sup> Feb  Mon 7 <sup>th</sup> Apr To Mon 21 <sup>st</sup> Apr	<b>Inset Days</b> Mon 6 <sup>th</sup> Jan
---	--	---	---

## Summer 2025

<b>CHILDREN IN SCHOOL</b>  Wed 23 <sup>rd</sup> Apr To Fri 23 <sup>rd</sup> Jul	<b>Half Term</b>  <b>Summer Holidays</b>	Mon 26 <sup>th</sup> May To Fri 30 <sup>th</sup> May  Tues 23 <sup>rd</sup> July TBC	<b>Public Hols</b> Mon 21 <sup>st</sup> April Mon 5 <sup>th</sup> May  <b>Inset Days</b> Tues 22 <sup>nd</sup> Apr Mon 2 <sup>nd</sup> June
--	--	--	---

